

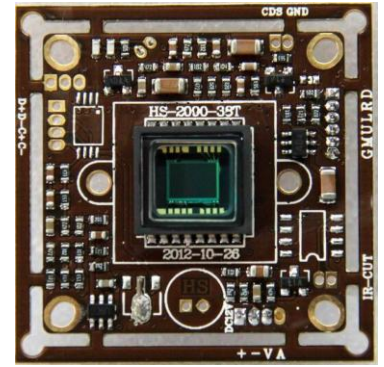
Specification

I. Specification: 1/3" color CCTV board camera

II. Main Feature

1. Color CCTV board camera
2. Excellent performance, clear and bright picture
3. Size(L×W×H):38×38×13mm

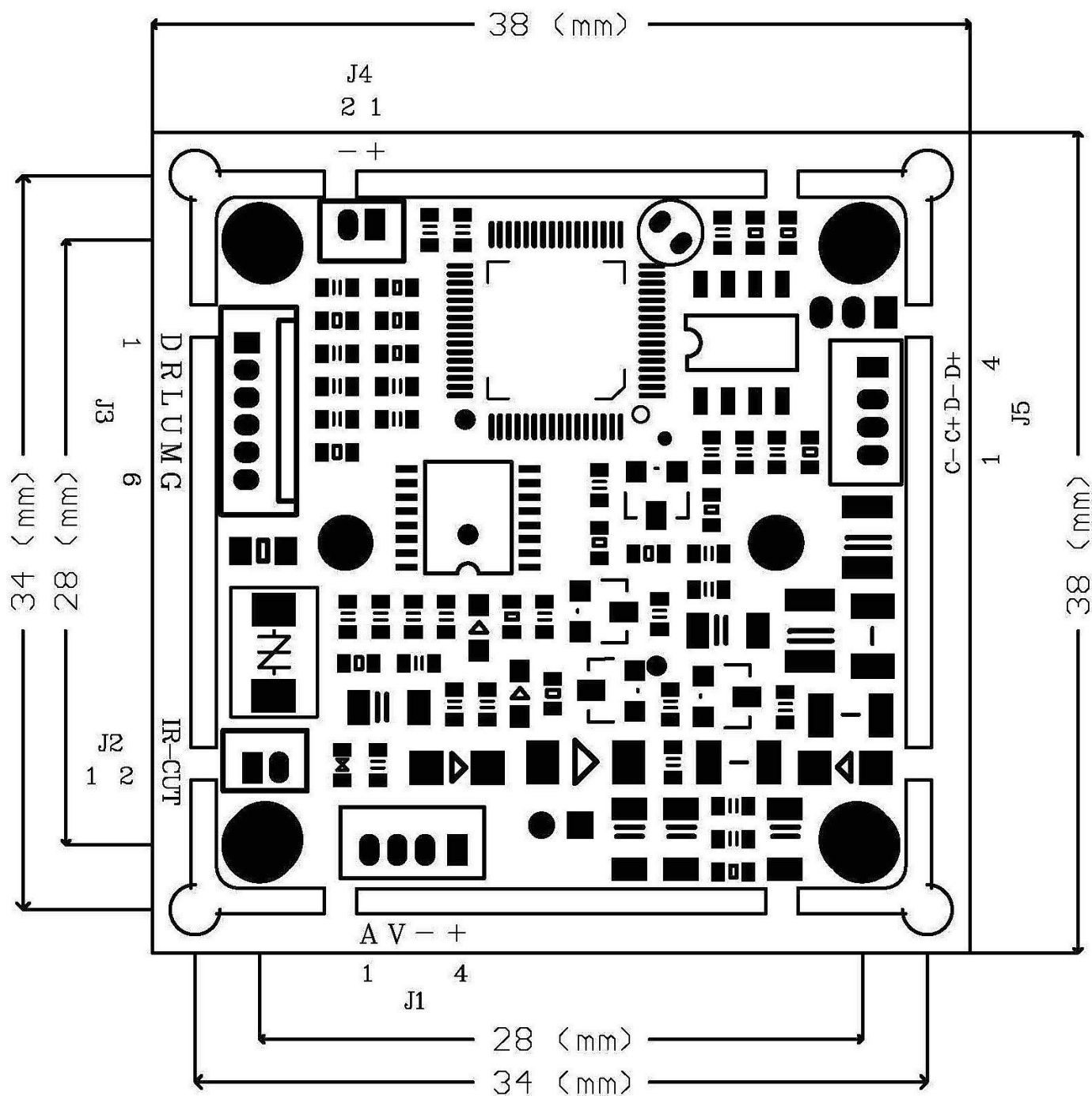
III: Detail Specifications:



Sensor	1/3 Sony 960H CCD Sensor	
Effective Pixel	PAL: 976 (H) ×582 (V)	NTSC: 976 (H) ×494 (V)
illumination	0.01 LUX	
Resolution	700TVL	
Function	DWDR:	Off/On (0-63)
	2DNR:	Off/On
	OSD Menu:	support
	HLC:	Whole Day / only At Night
	exposure:	Shutter/Brightness/AGC/DWDR
	backlight:	BLC/HLC/Off
	White Balance:	manual/ATW/AWB/ AWC→SET
	Day/Night:	Auto/Color/B/W/External Control
	Special:	camera title/motion detect/privacy cover/protocol/park line/version
	Image Adjust:	Lens Shad. /2DNR/mirror/ Font Color / Contrast / Sharpness / Display / NEG. Image
	Dpc:	support
	language:	CHS/Espanol/Russian/German/Portuguese/French/Japanese/CHT/English
	Exit:	Save/Not Save/Reset
Electronic Shutter	1/50~1/100000s	1/60~1/100000s
S/N	>48dB	
Video Output	1.0V p-p/75Ω	
Operation Temperature	-10 °C to 60 °C	
Working Humidity	Relative humidity less than 90%	
Power	DC12V	

Product specifications and appearance are subject to change without notice.

IV. Size (Unit:mm /±0.3mm)



Serial No.	J1	J2	J3	J4	J5
P1	AUDIO	IR CUT 1	DOWN	CDS	CONT-
P2	VIDEO	IR CUT 2	RIGHT	GND	CONT+
P3	GND		LEFT		DRIVE-
P4	+DC12V		UP		DRIVE+
P5			MENU		
P6			GND		

V: OSD Menu:

Lens	Video	Brightness	0-255	
		IRIS Speed	0-15	
	Manual	Brightness	0-255	
	DC	Brightness	0-255	
		IRIS Speed	0-15	
Exposure	Shutter	Auto		
		1/50		
		FLK		
		1/250		
		1/500		
		1/1000		
		1/2000		
		1/4000		
		1/5000		
		1/10000		
		1/100000		
	AGC	High/Middle/Low		
	DWDR	ON/OFF	0-63	
White Bal.	Manual	Color Temp	Manual	Blue 0-255
				Red 0-255
			Indoor	
			Outdoor	
		Blue		
		Red		
	ATW			
	AWB			
	AWC→SET			
	ANTI.CRL			
Backlight	BLC	Area Sel.	Area1/Area2	
		Area State	ON/OFF	
		Gain	0-255	
		Height	0-15	
		Width	0-15	
		Left/Right	0-15	
		Top/Bottom	0-15	
	HLC	Level	0-255	
		Mode	All Day	
			Night Only	
		MASK SKIP	ON	Height 0-15
				Width 0-15
				Left/Right 0-15
				Top/Bottom 0-15
			OFF	
	OFF			
Day&Night	EXT	D→N Delay	1/3/5/10/15/20/25/30 sec	
		N→D Delay	1/3/5/10/15/20/25/30 sec	
	Color			
	Auto	D→N Level	0-224	

		D→N Delay	1/3/5/10/15/20/25/30 sec	
		N→D Level	0-255	
		N→D Delay	1/3/5/10/15/20/25/30 sec	
	B/W	Burst	ON/OFF	
		IR Smart	ON	IR Gain 0-255
				Height 0-15
				Width 0-15
				Left/Right 0-15
				Top/Bottom 0-15
			OFF	
		IR Level	High/Low	
DPC	Start	Cover the lens then press enter key		
	DPC View	ON/OFF		
	LS Value	0-63		
	DIFF.	0-63		
	Area HS	1-255		
	Area HE	1-255		
	Area VS	1-255		
	Area VE	1-255		
Special	CAM Title	ON/OFF		
	Motion	ON/OFF	4 Area	
	Privacy	ON/OFF	8 Area	
	Park.line	ON/OFF		
	Image ADJ.	Lens Shad.	ON	Level 0-255
				H-Center 0-255
				V-Center 0-255
			OFF	
		2DNR	ON	Level 0-15
			OFF	
		Mirror	ON/OFF	
		Font Color	Font	0-15
			ID&Title	0-15
		Contrast	0-255	
		Sharpness	0-31	
		Display	USER	
			CRT	
			LCD	
		NEG.Image	ON/OFF	
	COMM ADJ.	CAM ID	0-255	
		Baud Rate	2400/4800/9600/19200/38400/57600	
		Protocol	NEXTCHIP/PELCO-D/PELCO-P	
		Display ID	ON/OFF	
		ID POS		
	Language	CHS/Espanol/Russian/German/Portuguese/French/Japanese/CHT/English		
Exit		Save/Not Save/Reset		